

Role of a *CUF1/CTR4* copper regulatory axis in the virulence of *Cryptococcus neoformans*

Scott R. Waterman, ... , Nina Singh, Peter R. Williamson

J Clin Invest. 2007;117(3):794-802. <https://doi.org/10.1172/JCI30006>.

Research Article

Microbiology

The study of regulatory networks in human pathogens such as *Cryptococcus neoformans* provides insights into host-pathogen interactions that may allow for correlation of gene expression patterns with clinical outcomes. In the present study, deletion of the cryptococcal copper-dependent transcription factor 1 (Cuf1) led to defects in growth and virulence factor expression in low copper conditions. In mouse models, *cuf1Δ* strains exhibited reduced dissemination to the brain, but no change in lung growth, suggesting copper is limiting in neurologic infections. To examine this further, a biologic probe of available copper was constructed using the cryptococcal *CUF1*-dependent copper transporter, *CTR4*. Fungal cells demonstrated high *CTR4* expression levels after phagocytosis by macrophage-like J774.16 cells and during infection of mouse brains, but not lungs, consistent with limited copper availability during neurologic infection. This was extended to human brain infections by demonstrating *CTR4* expression during *C. neoformans* infection of an AIDS patient. Moreover, high *CTR4* expression by cryptococcal strains from 24 solid organ transplant patients was associated with dissemination to the CNS. Our results suggest that copper acquisition plays a central role in fungal pathogenesis during neurologic infection and that measurement of stable traits such as *CTR4* expression may be useful for risk stratification of individuals with cryptococcosis.

Find the latest version:

<https://jci.me/30006/pdf>





Role of a *CUF1/CTR4* copper regulatory axis in the virulence of *Cryptococcus neoformans*

Scott R. Waterman,¹ Moshe Hacham,¹ Guowu Hu,¹ Xudong Zhu,¹ Yoon-Dong Park,¹ Soowan Shin,¹ John Panepinto,¹ Tibor Valyi-Nagy,² Craig Beam,³ Shahid Husain,⁴ Nina Singh,⁴ and Peter R. Williamson^{1,2,5}

¹Section of Infectious Diseases, Department of Medicine, University of Illinois at Chicago College of Medicine, Chicago, Illinois, USA. ²Department of Pathology, University of Illinois at Chicago Medical Center, Chicago, Illinois, USA. ³Division of Epidemiology and Biostatistics, School of Public Health, University of Illinois at Chicago, Chicago, Illinois, USA. ⁴Division of Infectious Diseases, Department of Medicine, University of Pittsburgh, Pittsburgh, Pennsylvania, USA. ⁵Jesse Brown VA Medical Center, Chicago, Illinois, USA.

The study of regulatory networks in human pathogens such as *Cryptococcus neoformans* provides insights into host-pathogen interactions that may allow for correlation of gene expression patterns with clinical outcomes. In the present study, deletion of the cryptococcal copper-dependent transcription factor 1 (Cuf1) led to defects in growth and virulence factor expression in low copper conditions. In mouse models, *cuf1Δ* strains exhibited reduced dissemination to the brain, but no change in lung growth, suggesting copper is limiting in neurologic infections. To examine this further, a biologic probe of available copper was constructed using the cryptococcal *CUF1*-dependent copper transporter, *CTR4*. Fungal cells demonstrated high *CTR4* expression levels after phagocytosis by macrophage-like J774.16 cells and during infection of mouse brains, but not lungs, consistent with limited copper availability during neurologic infection. This was extended to human brain infections by demonstrating *CTR4* expression during *C. neoformans* infection of an AIDS patient. Moreover, high *CTR4* expression by cryptococcal strains from 24 solid organ transplant patients was associated with dissemination to the CNS. Our results suggest that copper acquisition plays a central role in fungal pathogenesis during neurologic infection and that measurement of stable traits such as *CTR4* expression may be useful for risk stratification of individuals with cryptococcosis.

Introduction

Cryptococcus neoformans has emerged as a major causative agent of infection in immunocompromised hosts as a result of infections such as AIDS as well as transplant conditioning regimens and cancer chemotherapy (1). The most serious clinical manifestation of cryptococcal infection is meningoencephalitis, which is occasionally associated with cryptococemia and is a predictor of poor outcome (2, 3). Cryptococcal pneumonia is also serious, but it is associated with a better prognosis and is more prevalent in organ transplant and hematologic malignancy patients (4–6). More recently, an immune reconstitution syndrome has been described both in AIDS patients with the availability of antiretroviral therapy (7) and in organ transplant/hematologic malignancy patients (8). Overall, AIDS-related rates of cryptococcal infection have diminished in developed countries with the advent of highly active antiretroviral therapy (HAART), but the problem has remained stubbornly persistent in transplant/hematologic patients. Clearly, a need remains for novel methods for the treatment and control of this disease.

The transition metal copper is both required for growth of fungi and highly sequestered by biologic buffers and proteins within the mammalian host (9). This suggests a scenario whereby the pathogen competes with the mammalian host for available copper stores. Unfortunately, some patients at risk for cryptococ-

cosis such as AIDS patients may be at a particular disadvantage in the cellular battle with pathogens for copper, because these patients have been shown to have elevated levels of copper in serum (10, 11). The importance of intact copper homeostasis in the fungal pathogen *C. neoformans* is suggested by the copper dependency of at least 2 virulence factors, the Cu/Zn superoxide dismutase (12) and the copper-containing laccase enzyme (13, 14). In addition, copper may prove to be particularly important during fungal pathogenesis, because copper homeostasis also affects iron through a requirement for copper by the high-affinity iron transporter Fet3 (15).

While there is little doubt that copper is required for pathogens such as *C. neoformans*, the question remains as to whether copper is biologically limiting to the pathogen within the mammalian host. To help address this question, we studied the role for a cryptococcal homolog of copper-dependent transcription factor 1 (Cuf1) and its relationship to the Cuf1-dependent copper transporter 4 (Ctr4) during mammalian pathogenesis. These studies showed that copper is indeed limiting to the fungus during infection of brain, but not lungs of mice, the former, requiring the induction of the copper transporter during infection in both mice and humans. Furthermore, strain variation in expression levels of the *CTR4* copper transporter was evident within a cohort of primary cryptococcal isolates from organ transplant patients, and that higher expression levels of this stable genetic trait were associated with brain dissemination in these patients.

Results

Identification of a copper-dependent transcription factor in C. neoformans. Complementation of one of a series of previously described lac-

Nonstandard abbreviations used: BAL, bronchoalveolar lavage; BCS, bathocuproinedisulfonic acid; CSF, cerebrospinal fluid; Ctr4, copper transporter 4; Cuf1, copper-dependent transcription factor 1; YPD, yeast extract/peptone/dextrose medium.

Conflict of interest: The authors have declared that no conflict of interest exists.

Citation for this article: *J. Clin. Invest.* 117:794–802 (2007). doi:10.1172/JCI30006.

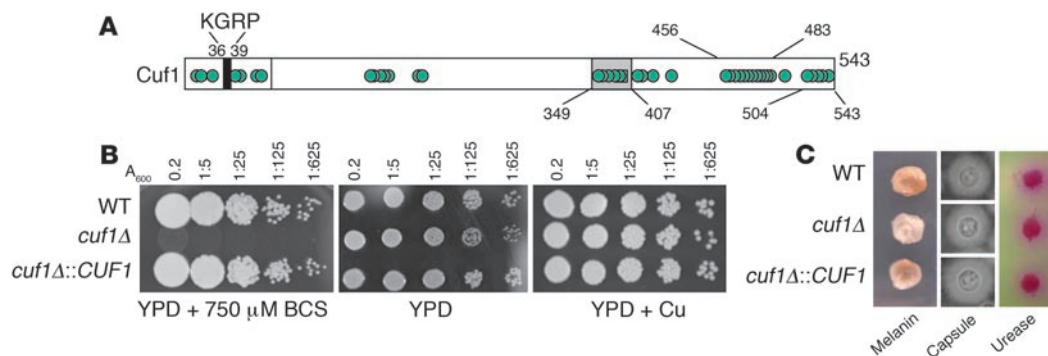


Figure 1

Deletion of *CUF1* from *C. neoformans* yields a copper-sensitive phenotype. **(A)** Schematic of the Cuf1 protein from *C. neoformans* shows a KGRP consensus sequence and multiple cysteine-rich domains (cysteines represented by circles). **(B)** Phenotypes of *CUF1* mutants under various copper conditions. Cells were diluted to an A_{600} of 0.2, serially diluted 1:5, and applied to YPD alone or YPD supplemented with either 750 μM BCS or 10 μM CuCl_2 at 37°C for 3 days. **(C)** Cells were incubated for melanin production as described in Methods (left panels) or on malt extract for 5 days at 30°C and examined by India ink (middle panels) or incubated on Christensen's agar for 2 hours (right panels).

case-deficient mutants (JEC111; ref. 16) identified a cryptococcal homolog of the copper regulator *CUF1*. The cryptococcal Cuf1 protein exhibits homology within the N terminus to DNA-binding regions described for the copper transcription factors, Ace1 from *Saccharomyces cerevisiae* and Cuf1 from *Schizosaccharomyces pombe*, both of which contain a KGRP consensus sequence (ref. 17 and Figure 1A). In addition, the cryptococcal Cuf1 contains a C-terminal region and contains a cysteine-rich sequence containing the consensus putative copper-binding motif $^{349}\text{C-X-C-X}_3\text{-C-X-C-X}_2\text{-C-X}_2\text{-H}$ common to the copper-sensing transcription factor Mac1 from *S. cerevisiae* and Cuf1 from *S. pombe* (18). Identification of a cryptococcal Cuf1 homolog provides a unique tool to study the role of copper homeostasis during pathogenesis, because Cuf1 is believed to be exclusively a copper-dependent transcription factor (18, 19).

As predicted by the JEC111 mutant, a targeted *cuf1* Δ mutant showed decreased laccase activity and a severe growth defect at low copper concentrations, achieved through the addition of the copper chelator bathocuproinedisulfonic acid (BCS); this growth defect was restored after addition of 10 μM CuCl_2 (Figure 1B), as previously described for *mac1*- and *cuf1*-null alleles of *S. cerevisiae* and *S. pombe*, respectively (17, 20). Lack of sufficient intracellular stores of copper would be expected to result in ineffective copper loading of the mitochondrial Cox1 enzyme, which was confirmed by the severe growth defect exhibited in Figure 1B (21). Growth in yeast extract/peptone/dextrose medium (YPD) without copper was mildly attenuated (Figure 1B), suggesting a mild deficiency of copper in this media; however, addition of 1 mM hydrogen peroxide or 2 $\mu\text{g}/\text{ml}$ menadione caused no additional growth reduction (data not shown), suggesting no increased sensitivity to oxidant stress of the mutant. However, the cryptococcal *cuf1* Δ mutant showed intact expression of capsule and urease (Figure 1C), suggesting sufficient metal stores for these activities under the conditions tested.

Reduced virulence of a cryptococcal *cuf1* Δ mutant strain. We next used the *cuf1* Δ strain in order to assess the virulence of a cryptococcal strain dependent on copper repletion for effective growth and virulence factor expression. As shown in Figure 2A, deletion of *CUF1* resulted in attenuated virulence in an i.v. mouse model of cryptococcosis despite a very large inoculum of 10^6 cells; application of the same number of WT cells caused rapid development of meningoencephalitis and death ($P < 0.01$, *cuf1* Δ versus WT and *cuf1* Δ ::*CUF1*).

Parallel experiments comparing virulence of a *lac1* Δ mutant to that of the WT in the same genetic background using the same i.v. model found a smaller reduction in virulence in the *lac1* Δ mutant (median survival, WT, 7 days; *lac1* Δ , 11 days; $P < 0.05$ [data not shown]) as reported previously for this fungal genetic background in a different mouse model (22), which suggests that the attenuated virulence of the *cuf1* Δ mutant was not solely caused by its defect in laccase activity. These data show the importance of *CUF1* in the expression of laccase and virulence and provide genetic evidence in support of the importance of intact copper homeostasis in cryptococcosis. To further understand the nature of the requirement for copper of the *cuf1* Δ mutant during pathogenesis, we assessed lung fungal burden in a pulmonary model using CBA/J mice (23). As shown in Figure 2B, WT and *cuf1* Δ mutant cells showed equivalent pulmonary fungal burden over 4 weeks, suggesting that efficient copper acquisition and processing is less essential to *C. neoformans* during pulmonary infection. Brain dissemination in the intranasal CBA/J model for all fungal strains was not sufficient to allow statistically analyzable comparisons between strains. To corroborate the similarity of growth in the lung using the i.v. model, a time course of fungal burdens was conducted after i.v. injection of 10^6 WT and *cuf1* Δ fungal cells. As shown in Figure 2C, *cuf1* Δ and WT cells showed equivalent growth in the lung in this second model ($P = 0.49$), whereas the rate of *cuf1* Δ growth in the brain was reduced compared with that of WT cells ($P = 0.006$), consistent with the attenuated virulence of the mutant shown in Figure 2A. Cells in the spleen showed a trend toward reduced growth of the mutant, but this was not statistically significant ($P = 0.10$).

***CTR4* expression as a copper-dependent biologic probe in murine macrophages and during infection of mice.** Copper-associated defects in the *cuf1* Δ mutant suggested that a copper transporter, such as a *CTR4* homolog recently identified for use as an inducible promoter in *C. neoformans* (24), may show *CUF1* dependence. As shown in Figure 3A, *CTR4* showed a high level of *CUF1*-dependent activation under copper-limiting conditions as assessed by Northern blot, as described previously for *S. pombe* (18). Furthermore, expression of a *CTR4*-GFP fusion protein in WT *C. neoformans* under its native promoter allowed for visualization of the gene's expression levels (Figure 3B) and quantitation by flow cytometry (Figure 3C), both of which demonstrated expression of *CTR4* under copper-limit-

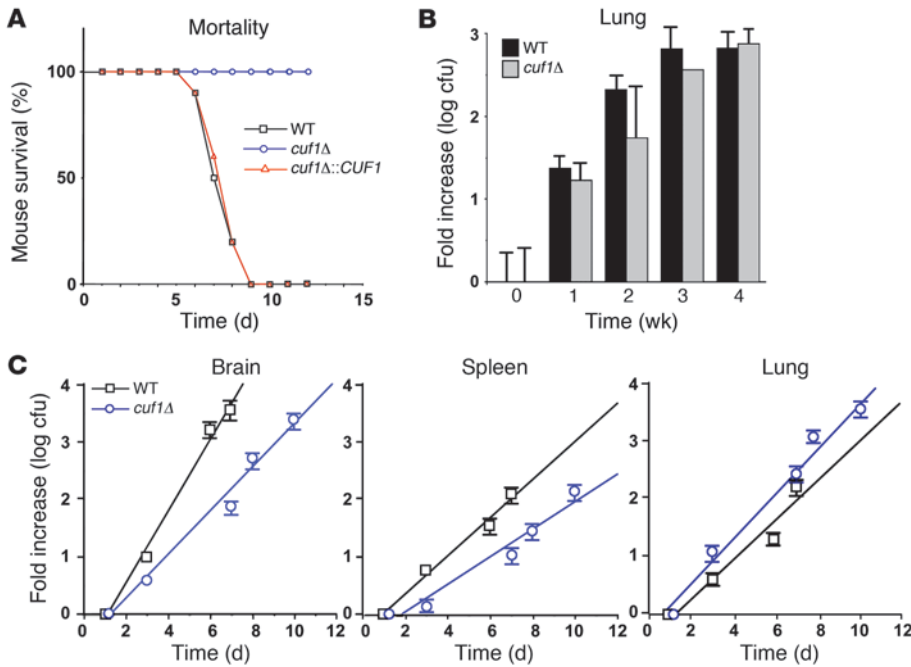


Figure 2

Effect of *CUF1* deletion on survival in mice and pulmonary fungal burden. (A) Swiss albino mice were injected by tail vein with 10^6 of the indicated cells, and their progress was followed until they were moribund. (B) CBA/J mice were intranasally inoculated with 10^5 of the indicated cells and at the indicated time points (0 weeks corresponds to 24 hours), mice were sacrificed, and their lungs were removed and cultured for growth of fungal cells on YPD. Data are mean \pm SEM cfu per organ. $n = 3$ per time point. Only 1 of the mice infected with *cuf1Δ* cells and assigned for sacrifice at 3 weeks survived. (C) Swiss albino mice were injected as in A and sacrificed at the indicated time points, after which the indicated organs were removed and cultured for growth of fungal cells on YPD.

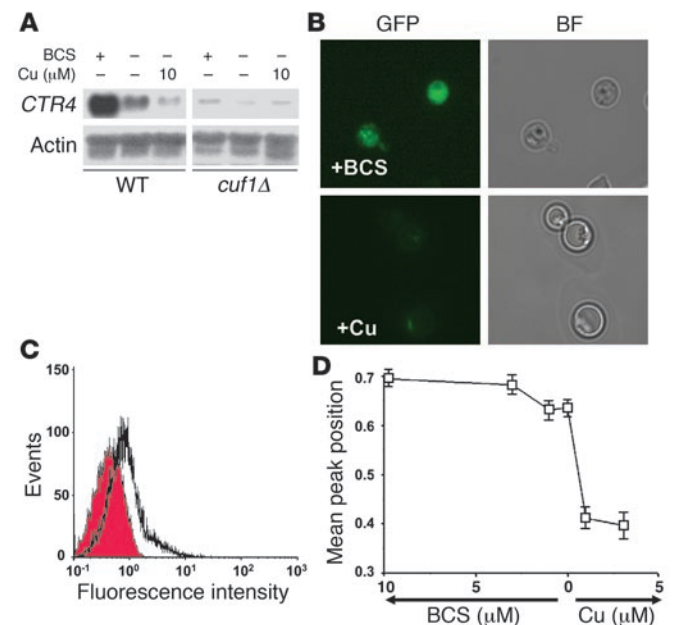
ing conditions and suppression after addition of as little as 1 μ M of copper salts (Figure 3D). In addition, *CTR4* expression was not induced in the presence of copper after glucose starvation or incubation with oxidants such as 1 mM hydrogen peroxide or 2 μ g/ml menadione (data not shown). In contrast, *cuf1Δ* cells expressing an equivalent *CTR4*-GFP construct did not exhibit copper-deficient *CTR4* expression, as expected (data not shown).

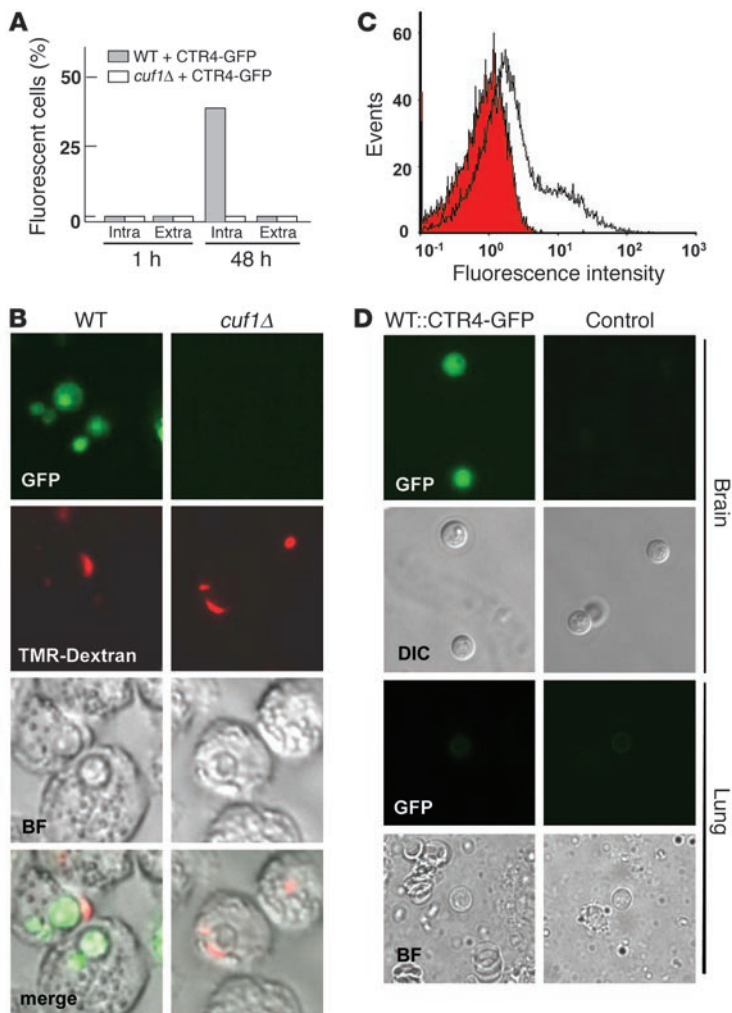
Next, *CTR4*-GFP expression was used to provide a biologic probe of copper availability to the fungus within the macrophage-like cell line J774.16 (25). After phagocytosis of cryptococcal cells, *CTR4* was initially repressed at 1 hour as a result of exogenous copper added to the fungal growth media prior to inoculation (Figure 4A). However, after 48 hours, intracellular cryptococcal cells, demonstrated by colocalization with tetramethylrhodamine-labeled dextran, showed fluorescence indicative of *CTR4* expression ($P < 0.001$, intracellular fungi versus all other groups; Figure 4, A and B). In contrast, phagocytosis of cryptococcal *cuf1Δ* mutant cells transformed with the equivalent *CTR4*-GFP construct in equivalent copy number did not show expression of *CTR4*-GFP, consistent with the notion of *CUF1*-dependent activation of *CTR4*. These

data suggest that cryptococcal *CTR4* activation is *CUF1* dependent within phagolysosomes of the J774.16 macrophage cell line, likely a result of its copper-limiting environment. Furthermore, fungal cells recovered from mouse brains showed a high level of *CTR4*-GFP expression (Figure 4, C and D) compared with equivalent cells transformed with a plasmid not expressing *CTR4*-GFP (as a control for autofluorescence), consistent with limited copper availability during brain infection. In contrast, *C. neoformans* WT and *cuf1Δ* cells recovered from mouse lungs in a pulmonary model did not express *CTR4*-GFP, which suggests a greater availability of copper in this host tissue or a reduced requirement for copper by the fungus (Figure 4D). However, insufficient fungal cells were obtained from the brains of CBA/J mice to evaluate *CTR4* expression.

Figure 3

CUF1 activates *CTR4* under low copper conditions. (A) Northern blot analysis was performed using RNA from the indicated cells grown on YPD and then incubated for 3 hours in asparagine salts with BCS or copper as indicated. (B) Epifluorescence of *C. neoformans* expressing a *CTR4*-GFP fusion protein under the native *CTR4* promoter on asparagine salts as in A and supplemented with either 10 μ M BCS or 3 μ M CuCl_2 . BF, bright field. Original magnification, $\times 1,000$. (C) Equivalent cells incubated as in B were analyzed by cell flow cytometry as described in Methods. The shaded histogram corresponds to signal from cells supplemented with Cu, and the open histogram corresponds to signal from cells treated with BCS. (D) Plot of mean peak position of epifluorescence by flow cytometry of *CTR4*-GFP-expressing cells incubated as in A and supplemented with the indicated concentrations of either BCS or copper.



**Figure 4**

Expression of *CTR4* in macrophages and mouse brain demonstrates low copper availability during infection. (A) WT or *cuf1Δ* cells expressing equivalent *CTR4*-GFP constructs under the *CTR4* promoter were incubated with the macrophage-like cell line J774.16 for the indicated times; 200 intracellular (Intra) and extracellular (Extra) were scored for the presence of epifluorescence at the indicated time points. (B) Representative intracellular fungal cells from A were visualized by epifluorescence and intracellular colocalization by Tetramethylrhodamine-labeled dextran after phagocytosis as described in Methods. Original magnification, $\times 1,000$. (C) *C. neoformans* cells expressing either *CTR4*-GFP (open histogram) or empty plasmid (shaded histogram) were injected (10^6 cells) by tail vein into Swiss albino mice and after sacrifice, fungal cells were harvested from their brains, and epifluorescence was measured by flow cytometry. (D) Representative cryptococcal cells from C were visualized by microscopy after recovery from the brains and lungs of intranasally injected CBA/J mice. DIC, differential interference contrast. Original magnification, $\times 1,000$.

biopsy, pleural fluid, or cerebrospinal fluid (CSF) (see Table 1). Those diagnosed with CNS infection had a positive CSF culture at the time of diagnosis, while those with pneumonia alone had at least 1 lumbar puncture at the time of diagnosis that yielded a negative cryptococcal antigen and negative fungal cultures. One patient that had a positive BAL culture but did not have a cryptococcal antigen performed was excluded prior to the study because of a concern that the BAL culture may represent colonization. As shown in Table 1, the immunosuppressive regimen was predominately anticalcineurin based, with 9 in the pulmonary group and 10 in the CNS group receiving such agents. Induction of fungal *CTR4* was performed on primary isolates in 2 independent experiments to assess the genetic stability of the phenotype in each isolate. For our in vitro induction media, we chose asparagine salts without glucose (pH 6.5) because this provided a convenient in vitro test that could be adapted for high throughput use in later clinical trials and because this media was found to induce both *CTR4* and laccase in the laboratory reference strain, H99, and laccase has also been demonstrated to be expressed during brain infection in mice (13). Only a single induction condition was chosen because of a concern that multiple comparisons between groups may reduce the statistical power of the comparison.

Interestingly, as shown in Figure 6, *CTR4* expression varied widely between the clinical isolates (Figure 6A) but showed reproducible *CTR4/ACT1* ratio values for each strain in duplicate experiments (Figure 6B). In contrast, the essential gene, *ACT1*, was expressed uniformly among isolates, varying less than 5%, as reflected by the intensity of ribosomal bands visualized by ethidium bromide staining of the gel. In addition, dot blots of genomic DNA from the clinical isolates showed uniform *CTR4/ACT1* ratios, varying no more than 5% between isolates, which demonstrated that the wide variation in hybridization signals in the *CTR4* Northern blot was not due to intrastrain variation in *CTR4* sequence (data not shown). Interestingly, numerous strains causing CNS infection expressed high levels of *CTR4* compared with isolates causing only pulmonary disease. In addition, the mean *CTR4/ACT1* ratio was significantly elevated in these isolates compared with those caus-

Expression of *CTR4* in human cryptococcosis. To determine whether the above findings in mice could be applied to human cryptococcosis, we assessed *CTR4* expression in human cryptococcosis. The patient was a 42-year-old male with fatal cryptococcosis that was reported previously (26). In situ hybridization was performed with an antisense RNA strand or a sense strand (negative control) of a 237-bp fragment encoding a nonconserved region of the C terminus of *C. neoformans CTR4*. A positive hybridization signal was detected only in sections probed with the antisense probe (Figure 5A), whereas sections probed with the corresponding sense probe showed no hybridization to yeast forms (Figure 5B). Sections were also stained with mucicarmine specific for *C. neoformans* capsule (Figure 5C) and H&E (Figure 5D). These data demonstrate cryptococcal *CTR4* expression during human infection, extending a requirement for efficient fungal copper acquisition to human disease.

In order to further examine the role of *C. neoformans CTR4* expression in human infection, we assessed *CTR4* expression in 24 consecutive primary clinical isolates from patients receiving solid organ transplants; isolates were collected as part of an ongoing study of *C. neoformans* infection in organ transplant patients (27). All strains were established to be serotype A strains (28). The patients included in the present study were restricted to those receiving solid organ transplant with a positive serum cryptococcal antigen and positive fungal cultures from either bronchoalveolar lavage (BAL), lung

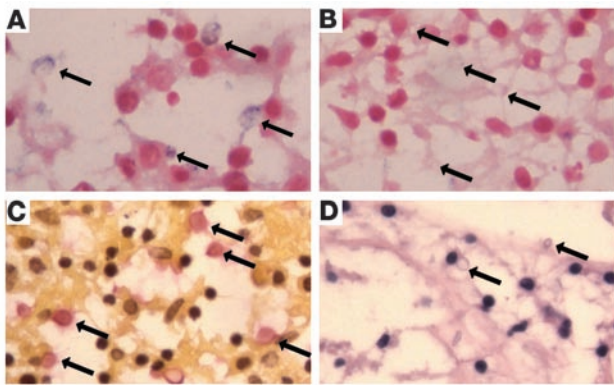


Figure 5
CTR4 expression during human cryptococcosis suggests low available copper stores during fungal infection. (A) In situ hybridization of *C. neoformans*-infected brain tissue hybridized with an antisense *CTR4* digoxigenin-labeled RNA probe. Arrows indicate alkaline phosphatase-positive yeast cells. (B) In situ hybridization of *C. neoformans*-infected brain tissue hybridized with a sense *CTR4* digoxigenin-labeled RNA probe. Arrows indicate alkaline phosphatase-negative yeast cells. (C) Mucicarmine stain of *C. neoformans*-infected brain tissue. Arrows indicate mucicarmine-positive yeast cells. (D) H&E stain of *C. neoformans*-infected brain tissue. Arrows indicate unstained yeast cells. Original magnification, $\times 400$.

ing pulmonary disease only ($P = 0.043$). In a secondary analysis, isolates with *CTR4/ACT1* ratios greater than 4.15, the mean value of the CNS isolates, were significantly more likely to disseminate to the brain ($P = 0.022$, Fisher's exact test), with an odds ratio of 16.8. In addition, because of a concern that 5 patients in the CNS infection group received different immunosuppressive regimens than did members of the pulmonary infection group (Table 1), additional analysis was performed comparing only the patients in each group receiving anticalcineurin-based regimens (i.e., excluding patients 11, 12, 14, 17, and 18 from Figure 6). According to this secondary analysis, the association of mean levels of *CTR4/ACT1* with CNS infection increased in significance, as *CTR4/ACT1* levels more highly correlated with dissemination to the CNS ($P = 0.019$). Interestingly, when isolates from representative high expressors (patients 16 and 22) and low *CTR4* expressors (patients 8 and 9) were each inoculated i.v. into 10 Swiss albino mice at a 10^4 inoculum, mouse survival was lower and brain cfu counts at day 8 were higher in the high-expressor group than in the low-expressor group (mean \pm SEM survival, patient 16, 9.1 ± 0.2 days; patient 22, 9.5 ± 0.2 days; patient 8, 20 ± 0 days; patient 9, 13 ± 1.4 days; brain cfu \pm SEM, patient 16, $1.4 \pm 0.5 \times 10^7$; patient 22, $1.1 \pm 0.2 \times 10^7$; patient 8, $4.9 \pm 0.9 \times 10^5$; patient 9, $7.8 \pm 1.0 \times 10^6$; $P < 0.01$, survival and cfu counts between all patients with the exception of patients 16 and 22). However, because mouse models for cryptococcosis have not been validated regarding the ability to predict strain-related virulence in humans, conclusions about the contribution of *CTR4* expression and virulence in these isolates must be interpreted with caution. Nevertheless, while such a result in a small sample size requires validation in larger trials for clinical applicability, it appears that *CTR4* expression was predictive of dissemination toward CNS infection in this cohort of 24 clinical isolates. Because of a low number of deaths among the groups (6 deaths), we were not able to analyze for outcome by this parameter.

Discussion

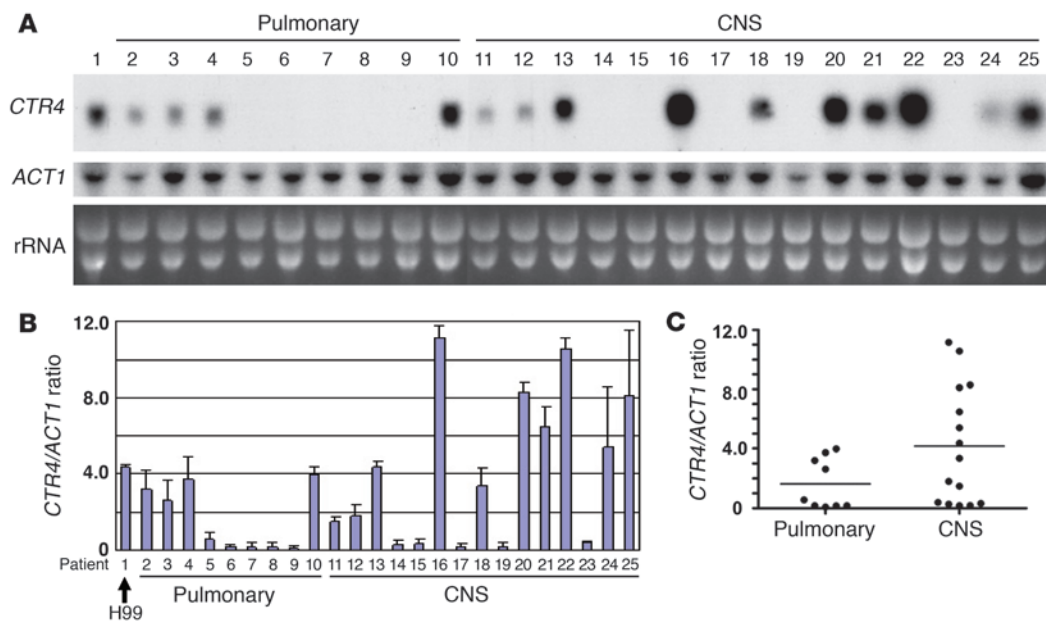
In the present study, isolation and deletion of a copper-dependent transcription factor, Cuf1, in the fungal pathogen *C. neoformans* allowed for analysis of the role of copper homeostasis during fungal infection. As expected, the cryptococcal *cuf1* Δ deletion strain exhibited copper-suppressible growth and virulence factor defects. More interestingly, virulence of the *cuf1* Δ deletion strain was attenuated compared with WT or *CUF1*-complemented cells using an i.v. dissemination model dependent on production of fatal meningoencephalitis (23). However, lung fungal burden of the *cuf1* Δ mutant after intranasal or i.v. challenge was equivalent to that of the WT, suggesting that the copper-suppressible phenotype is more associated with the development of neurologic rather than pulmonary disease. While copper has not to our knowledge been directly implicated in fungal virulence prior to these studies, the importance of effective copper acquisition and processing by pathogens has been suggested by an association in *Candida albicans* of the copper transporter Ctr1 and iron uptake (29), the role of *C. albicans* *MAC1* in filamentation and invasive growth of *S. cerevisiae* (30), and differential expression of copper-related genes during phenotypic switching (31), traits associated with virulence in *C. albicans*. Indeed, competition for copper within the host may represent a general principle of microbial host defense, as increases in septic death have been observed following liver transplant in patients with Wilson disease, which is associated with copper excess (32). This finding suggests that, in addition to possible immune dysregulation effects (33), excess copper stores could tilt the balance of infection toward pathogens such as *C. neoformans* by providing a more ready source of the required metal.

Because transcription of *CUF1* is constitutive, activating genes by a posttranslational mechanism (34), we used transcriptional levels of a copper/*CUF1*-dependent copper transporter, *CTR4*, fused to a GFP reporter gene in order to biologically probe both *CUF1* activity and copper levels as sensed by the fungal pathogen. Historically, copper levels have been notoriously difficult to evaluate because

Table 1
 Clinical and demographic characteristics of the study patients and transplant recipients with *C. neoformans* infection

Characteristic	Pulmonary (n = 9)	CNS (n = 15)
Age, yr (range)	53 (27–77)	47 (26–68)
Transplant type		
Kidney	3	10
Kidney-pancreas	–	1
Liver	3	4
Heart	2	–
Lung	1	–
Immunosuppressive regimen		
Anticalcineurin-based	9	10
Tacrolimus and prednisone	4	1
Tacrolimus, azathioprine, and prednisone	2	2
Tacrolimus, MMF, and prednisone	2	6
Cyclosporine, MMF, and prednisone	0	1
Tacrolimus only	1	–
Other	–	5
Azathioprine and prednisone	–	4
MMF and prednisone	–	1

MMF, mycophenolate mofetil.

**Figure 6**

CTR4 expression varies among cryptococcal isolates, and high levels of expression confer greater ability to disseminate to the brain in human patients. (A) Twenty-four *C. neoformans* primary isolates were obtained from consecutive patients (or an H99 laboratory strain) as described in the Methods. Cells were induced by inoculation in asparagine salts, and RNA was obtained and subjected to Northern blot using a fragment of the indicated gene. Ribosomal RNA (rRNA) was visualized by ethidium bromide staining of gels. (B) Northern blots were conducted in duplicate, and *CTR4/ACT1* ratios were calculated for the indicated strains by densitometry. (C) Plot of *CTR4/ACT1* ratios according to infected organ. Horizontal lines indicate the mean value for each group. $P = 0.04$.

the metal's biologic availability is heavily dependent on the degree of sequestering by numerous proteins and buffers and may also be dependent on its oxidation state, making bulk measurements of tissue quantities uninformative (35). Interestingly, cryptococcal *CTR4* expression was found to be highly induced during macrophage residence in a J774.16 cell line, suggesting that the availability of copper to the intracellular pathogen is insufficient for its metabolic requirements. Macrophage residence is an important environmental niche during pathogenesis of *C. neoformans* (36). Reducing macrophage copper content could thus be a specific defense mechanism, limiting infection by depriving the pathogen of an essential nutrient. Poor biologic availability may also be caused by an unfavorable oxidation state of the copper ion, which can be altered by macrophage-secreted molecules such as nitric oxide (37). Alternatively, minimization of copper stores in macrophages could represent a regulatory phenomenon, as copper has been shown to induce release of iron stores through a regulation of macrophage *FPN1* expression (38). High expression levels of *CTR4* were also exhibited by cryptococcal cells recovered from mouse brains, consistent with low levels of available copper in this organ. This could be a result of low levels of copper within macrophages containing intracellular fungi or of specific mechanisms within the brain that limit the availability of copper. It is worth noting that excesses of copper have been associated with pathologic neuronal apoptosis, which leads to Alzheimer disease, Parkinson disease, and amyotrophic lateral sclerosis (39). In addition, endocytosis by neuroendothelial cells is thought to represent a mechanism for neurodissemination of *C. neoformans* (40) and could represent a low-copper intracellular environment similar to that of macrophages that would require efficient fungal copper acquisition for successful

brain invasion. In contrast, *CTR4*-GFP expression in cryptococcal cells recovered from the lung was suppressed, suggesting that copper stores may be less limiting during pulmonary infections, consistent with the pulmonary fungal burden data showing growth of *cut1Δ* cells similar to that of WT cells. These effects may be caused by a requirement of higher levels of copper in lung tissue to prevent acute lung injury, which is associated with copper suppression of excessive MMP-2 and MMP-9 activity (41). Alternatively, metabolic requirements for copper by the fungus may be lower in lung tissue than in the brain, resulting in a less copper-limiting environment and reduced *CTR4* expression during pulmonary infection. In addition, it is possible that heterogeneity in other phenotypes, such as cytokine response to antigen (42), could also contribute to differential *CTR4* expression patterns.

Recently, there has been interest in approaches that may allow stratification of clinical outcomes based on unique genetic attributes (43). This prompted an examination whose results showed that cryptococcal *CTR4* expression, under equivalent in vitro conditions, varied among patient isolates from organ transplant recipients; these expression levels correlated with a propensity for dissemination to the CNS, which is associated with poor outcome (2). This is not to say that *CTR4* expression is the sole determinant of CNS dissemination in cryptococcosis. In infectious diseases such as cryptococcosis, the outcome of an infection is determined by a complex array of properties from both the host and the pathogen.

Regarding the pathogen, classical virulence studies have emphasized qualitative differences between isolates (i.e., having a capsule or not having a capsule); however, in a real-world environment, strain-to-strain variability is more a reflection of quantitative differences. Thus, to understand differences in virulence between unrelated WT



strains, it may be important to characterize regulatory pathways, such as *CUF1/CTR4*, responsible for the natural phenotypic variations that can contribute to the ability of individual pathogens to successfully thrive in the mammalian host. Attributes that are essential for growth under all conditions, such as actin expression by the *ACT1* gene (44), may be so essential that they are under strong evolutionary pressure to maintain uniform expression among strains, as demonstrated in the present study, much in the way that amino acids within the active sites of enzymes are more invariable among strains than are those in the more dispensable folding regions outside of the active site (45). Nonessential genes that are nevertheless important for survival in the host have recently been described as conveying properties of pathogenic fitness (46). Lack of an absolute requirement for survival in the environment may thus allow greater transcriptional variation in genes of pathogenic fitness, such as we observed for *CTR4* among the cohort of patient isolates in the present study. It is notable that *CTR4* expression levels *in vitro* did not predict CNS dissemination in all isolates tested. Thus, *CTR4* gene expression may be one of several factors that mediate the biologically complex propensity of this organism to disseminate to the CNS. Nevertheless, high expression of genes such as *CTR4* may be associated with more successful pathogen strains that are more efficient at survival in the copper-deficient conditions of the host, allowing coordinate expression of virulence factors (47) such as laccase used to identify the *cuflA* mutant in these studies. These results were suggested by our mouse studies, in which the copper-sensitive *cuflA* mutant cells displayed attenuated virulence despite a high fungal inoculum. However, the effect of copper acquisition appeared to be even greater during human infection, perhaps due to differences in host tissue and smaller fungal burdens expected early in infection, and points to the importance of translating animal experiments to the human condition. In conclusion, while these findings require validation in larger clinical studies for generalizability, they suggest that robust methods might be developed that allow for risk stratification of patients' isolates based on genetic variability in the regulation of pathogenic fitness genes such as *CTR4*.

Methods

Fungal strains, plasmids, and media. The *C. neoformans* ATCC 208821 (H99) strain was a generous gift of J. Perfect, Duke University, Durham, North Carolina, USA. Strain H99FOA19, a uracil auxotrophic mutant derived from H99 (48), was employed as a recipient strain for creating targeted gene deletion. The strains were grown in YPD (2% glucose, 1% yeast extract, 2% Bacto-peptone) or YPD agar followed by incubation in asparagine salts without glucose (1 g/l asparagines; 10 mM sodium phosphate, pH 6.5; and 0.25 g/l MgSO₄) for *CTR4* expression. Asparagine minimum selective media for transformant selection and detection of laccase production were previously described (49). Plasmid pCIP, containing the *URA5* gene, was a kind gift of K.J. Kwon-Chung, NIH, Bethesda, Maryland, USA. Plasmids containing the hygromycin resistance gene were a gift of G. Cox, Duke University, Durham, North Carolina, USA (50).

Cell lines and culture media. J774.16 (ATCC) is a murine macrophage-like cell line derived from a reticulum sarcoma. Cells were maintained at 37°C in 10% CO₂ in DMEM (Invitrogen) that was supplemented with 10% heat-killed FCS (Harlan), Cellgrow 1× nonessential amino acids (Mediatech), Cellgrow 100 mg/ml penicillin/streptomycin, and 10% NCTC-109 medium (Invitrogen). Cell lines were used between 5 and 15 passages.

Disruption and complementation of *CUF1*. Chemical methods were used to isolate a laccase-deficient mutant, JEC111 (a kind gift of J. Edman, UCSF, San Francisco, California, USA; ref. 16). The mutant was complemented by a

cryptococcal complementation library (kindly provided by J. Heitman, Duke University, Durham, North Carolina, USA) as described previously (51). One plasmid was found to complement the mutant and contained a 7.4-kb fragment of a cryptococcal gene containing a single annotated sequence (annotation 177.m03070; http://www.tigr.org/tigr-scripts/euk_manatee/shared/ORF_infopage.cgi?db=cna1&orf=177.t00214).

To make the *CUF1* deletion construct, a 2.7-kb genomic fragment encompassing the major part of the *CUF1* open reading frame was PCR amplified and subsequently cloned into pBluescript SK (Stratagene), and a 1.3-kb PCR-amplified fragment of the *C. neoformans* transformation marker *URA5* (52) was inserted within 2 *PstI* sites, resulting in a 1.3-kb disruption within *CUF1*. *C. neoformans* strain H99FOA19 was then transformed by biolistic transformation, transformants were screened by PCR (50), and the deletion was confirmed by Southern blot analysis. Digestion of WT *C. neoformans* DNA with *SacI* yielded a 7.7-kb band hybridized with a 6-kb fragment of the *CUF1* gene, whereas mutant DNA digested and hybridized in the same way resulted in 2 bands (5.8 kb and 1.7 kb) because of a *SacI* restriction site within the *URA5* transformation marker. The *cuflA* mutant strain was then complemented using a 6-kb genomic fragment and a hygromycin resistance cassette (50) as previously described (48). Genomic insertion of the complemented gene was confirmed by Southern blot analysis of uncut DNA.

Construction of a *CTR4-GFP* cryptococcal expression plasmid. The cryptococcal shuttle vector pORA-KUTAP was used to express a fusion protein between the *CTR4* promoter region and a recently described GFP possessing *C. neoformans* codon usage (53). First, pORA-KUTAP containing the synthetic GFP upstream of the EF-1 α terminator was digested with *BglII* and *EcoRI* to remove the *ACT1* promoter; next, a PCR-amplified fragment of genomic DNA from H99 (using primers GCCGCCGGATCCCAGATTAAGTGAAGCAAG [CTR4-857S-Bam] and CTTGGAATCCCCATGTTTCATGTGGCTGTG [CTR4-1934A-R]) was digested with compatible enzymes and ligated to produce pCTR4-GFP. The plasmid was recovered, verified by sequencing, linearized with *SceI*, and transformed into either H99FOA19 or *cuflA*FOA cells by standard methods of electroporation (48). Transformants were selected by equivalent copy number demonstrated on uncut Southern analysis as described previously (54). For *in vitro* expression, cells were incubated in asparagine salts containing 2% glucose with the indicated amounts of copper (data not shown) or copper chelators, 1 mM hydrogen peroxide, or 2 μ g/ml menadione as described previously (53) overnight and then examined either by deconvolution microscopy using an IX-70 Olympus microscope or by flow cytometry. GFP fluorescence was examined in each cell using an EPICS Elite ESP flow cytometer gated to exclude aggregates using time of flight. GFP signal was collected using a 550-nm pass dichroic and a 525-nm bandpass filter.

Macrophage phagocytosis and *CTR4* expression. The J774.16 macrophage-like cell line (ATCC) was used to evaluate the ability of the *C. neoformans* cells to grow inside macrophages and express *CTR4-GFP* using a previously described method for cryptococcal phagocytosis (55). Briefly, cells were allowed to grow for 5–7 days in DMEM (Cellgro) supplemented with 10% FCS and harvested from monolayers. Macrophage concentration was adjusted to 10⁵ cells/ml, and 100 μ l of the macrophage suspension was added to each well of a 96-well plate. The cells were primed with murine IFN- γ (Sigma-Aldrich) at a concentration of 50 U/ml and were incubated at 37°C, 5% CO₂ overnight. Yeast cell suspensions (10⁷ per ml) of WT H99, WT::CTR4-GFP, and *cuflA*::CTR4-GFP were prepared from fresh cultures in 2% glucose, asparagine salts agar containing 10 μ M CuCl₂ opsonized with 100% mouse serum and incubated at 37°C for 1 hour. To each well in the 96-well plate, 10⁴ serum-opsonized cryptococcal cells were added plus 50 U IFN- γ (Sigma-Aldrich) and 1 μ g LPS and a suspension of TMR-labeled dextran (1 \times 10⁶ MW; Invitrogen) to allow colocalization of fungal cells and the phagolysosome as described previously (56) and incubated at 37°C 5% CO₂. After 1 hour, extracellular



yeast cells and dextran were removed by washing with PBS 3 times. Cells were then examined at 1, 24, and 48 hours by epifluorescent microscopy using an IX-70 deconvolution microscope and Slidebook version 4 software (Intelligent Imaging Innovations Inc.). All experiments were performed in triplicate, and the results of 1 representative experiment are shown.

In situ hybridization. The method of Panepinto et al. (26) was used. Briefly, formaldehyde-fixed tissue was sectioned (4- μ m sections), dewaxed with xylene, and rehydrated. A 237-bp PCR-amplified fragment of a *CTR4* exon from H99 genomic DNA (using the primers GCCGCCTCTAGACCCT-GCGCGCCATCCTTC [CTR4+434A-Xba] and GCCGCGCTCGAGAT-GTTGCTCAACTTCAACACCG [CTR4+197S-Xho]) was subcloned into pBluescript SK (Stratagene), verified by sequencing, transcribed using T7 polymerase, and labeled with U-digoxigenin according to the manufacturer's instructions (Roche Diagnostics). Tissue sections were subjected to RNA denaturation with sequential washes with 0.2 N HCl, washed twice with SSC at 70°C, blocked with buffer containing iodoacetamide and N-ethylmaleimide, and dehydrated. Serial sections were hybridized with either sense or antisense probes at 50°C overnight, then washed at the same temperature in RNAase-free buffer. Slides were incubated with a second alkaline phosphatase-conjugated secondary antibody overnight at 4°C, washed, and visualized with 5-bromo,4-chloro,3-indolylphosphate/nitroblue tetrazolium substrate and counterstained with Fast Red (Sigma-Aldrich).

Participants and sample collection. Patients were recruited as part of an ongoing study of *C. neoformans* infection in organ transplant patients (57). Briefly, patients undergoing solid organ transplant who had a cryptococcal isolate from sterile fluid and a confirmatory positive cryptococcal antigen were recruited from the University of Pittsburgh Medical Center. All study protocols were approved by the respective institutional review boards at the University of Pittsburgh and the University of Illinois at Chicago. Frozen stocks of primary patient isolates were divided into 2 independent cultures and grown on YPD agar for 5 days, after which a fresh mid-log phase culture was induced for *CTR4* by incubation in asparagine salts for 3 hours at 30°C as described previously (26). RNA and DNA was harvested, and Northern blot or dot blots were performed as described previously (48) with a PCR-amplified fragment of *CTR4* from strain H99 using the primers CAGATTAAGTGAAGCAAG (CTR4-1) and CCCATGTTTCATGTGGCTGTG (CTR4-2) or *ACT1* from the same strain using the primers GCTGGTGACGACGCTCCC (ACT1-MA-F) and GCAAGGATAGAACCCGATCC (ACT1-MA-R).

Virulence factor expression and virulence studies. Capsule was measured by India ink microscopy (48), urease production was assessed by incubation on Christensen's agar (58), and the method of Liu et al. (59) was used to measure laccase activity. Virulence studies were conducted according to a previously described i.v. mouse meningoencephalitis model (14) using Swiss albino mice or an intranasal model using CBA/J mice (12). Animal studies were approved by the University of Illinois at Chicago Animal Care Committee. Studies involving human tissue were approved by the University of Illinois at Chicago Office for the Protection of Research Subjects and the Institutional Review Board (protocol no. 2004-0600).

Statistics. Statistical significance of mouse survival times was assessed by Kruskal-Willis analysis (ANOVA on Ranks, GraphPad Prism software, version 4.03) as described previously (60). Differences between expression levels in the human *C. neoformans* isolates were assessed by a nonparametric 2-tailed unpaired Student's *t* test with Welch's correction. An *F* test was performed, which showed the variances were significantly different ($P = 0.022$). Fisher's exact test was performed as described previously (61). Survival in mice of the human isolates was compared using a 1-way analysis of variance with a post-test Bonferroni correction for multiple comparisons as described previously (61). In mouse mortality studies, experiments were terminated for humanitarian reasons once significance between groups was established; for statistical comparisons, time of death of the survivors was recorded as the day of experimental termination.

Acknowledgments

We would like to acknowledge J. Bennett, W. Walden, and J. Kaplan for helpful discussions. This work was supported in part by US Public Health Service grants AI45995 and AI49371 from the NIH. We also acknowledge the use of the *C. neoformans* Genome Project, Stanford Genome Technology Center, funded by the National Institute of Allergy and Infectious Diseases, NIH, under cooperative agreement AI47087.

Received for publication August 9, 2006, and accepted in revised form December 12, 2006.

Address correspondence to: Peter R. Williamson, Room 888, MC 735, 808 S. Wood St., Chicago, Illinois 60612, USA. Phone: (312) 996-6070; Fax: (312) 413-1657; E-mail: prw@uic.edu.

- Casadevall, A., and Perfect, J. 1998. *Cryptococcus neoformans*. ASM Press, Washington, DC, USA. 541 pp.
- Saag, M.S., et al. 2000. Practice guidelines for the management of cryptococcal disease. Infectious Diseases Society of America. *Clin. Infect. Dis.* **30**:710-718.
- Jean, S.S., et al. 2002. Cryptococcaemia: clinical features and prognostic factors. *QJM.* **95**:511-518.
- Vilchez, R.A., et al. 2001. The clinical epidemiology of pulmonary cryptococcosis in non-AIDS patients at a tertiary care medical center. *Medicine (Baltimore).* **80**:308-312.
- Pagano, L., Caira, M., and Fianchi, L. 2005. Pulmonary fungal infection with yeasts and pneumocystis in patients with hematological malignancy. *Ann. Med.* **37**:259-269.
- Pagano, L., Caira, M., Falcucci, P., and Fianchi, L. 2005. Fungal CNS infections in patients with hematologic malignancy. *Expert Rev. Anti. Infect. Ther.* **3**:775-785.
- Jenny-Avital, E., and Abadi, M. 2002. Immune reconstitution cryptococcosis after initiation of successful highly active antiretroviral therapy. *Clin. Infect. Dis.* **35**:e128-e133.
- Singh, N., et al. 2005. An immune reconstitution syndrome-like illness associated with *Cryptococcus neoformans* infection in organ transplant recipients. *Clin. Infect. Dis.* **40**:1756-1761.
- Rees, E., and Thiele, D. 2004. From aging to virulence: forging connections through the study of copper homeostasis in eukaryotic microorganisms. *Curr. Opin. Microbiol.* **7**:175-184.
- Jimenez-Exposito, M., et al. 2002. Micronutrients in HIV-infection and the relationship with the inflammatory response. *Med. Clin. (Barc.).* **119**:765-769.
- Moreno, T., Artacho, R., Navarro, M., Perez, A., and Ruiz-Lopez, M. 1998. Serum copper concentration in HIV-infection patients and relationships with other biochemical indices. *Sci. Total Environ.* **217**:21-26.
- Cox, G., et al. 2003. Superoxide dismutase influences the virulence of *Cryptococcus neoformans* by affecting growth within macrophages. *Infect. Immun.* **71**:173-180.
- Williamson, P.R. 1994. Biochemical and molecular characterization of the diphenol oxidase of *Cryptococcus neoformans*: identification as a laccase. *J. Bacteriol.* **176**:656-664.
- Salas, S.D., Bennett, J.E., Kwon-Chung, K.J., Perfect, J.R., and Williamson, P.R. 1996. Effect of the laccase gene *CNLAC1*, on virulence of *Cryptococcus neoformans*. *J. Exp. Med.* **184**:377-386.
- Davis-Kaplan, S., Askwith, C., Bengtzen, A., Radisky, D., and Kaplan, J. 1998. Chloride is an allosteric effector of copper assembly for the yeast multicopper oxidase Fet3p: an unexpected role for intracellular chloride channels. *Proc. Natl. Acad. Sci. U. S. A.* **95**:13641-13645.
- Torres-Guerro, H., and Edman, J.C. 1994. Melanin-deficient mutants of *Cryptococcus neoformans*. *J. Med. Vet. Mycol.* **32**:303-313.
- Labbe, S., Pena, M., Fernandes, A., and Thiele, D. 1999. A copper-sensing transcription factor regulates iron uptake genes in *Schizosaccharomyces pombe*. *J. Biol. Chem.* **274**:36252-36260.
- Beaudoin, J., Mercier, A., Langlois, R., and Labbe, S. 2003. The Schizosaccharomyces pombe Cuf1 is composed of functional modules from two distinct classes of copper metalloregulatory transcription factors. *J. Biol. Chem.* **278**:14565-14577.
- Beaudoin, J., and Labbe, S. 2001. The fission yeast copper-sensing transcription factor Cuf1 regulates the copper transporter gene expression through an Ace1/Amt1-like recognition sequence. *J. Biol. Chem.* **276**:15472-15480.
- Jungmann, J., et al. 1993. MAC1, a nuclear regulatory protein related to Cu-dependent transcription factors is involved in Cu/Fe utilization and stress resistance in yeast. *EMBO J.* **12**:5051-5056.
- Toffaletti, D.L., Del Poeta, M., Rude, T.H., Dietrich, F., and Perfect, J.R. 2003. Regulation of cytochrome



- c oxidase subunit 1 (COX1) expression in *Cryptococcus neoformans* by temperature and host environment. *Microbiology*. **149**:1041–1049.
22. Pukkila-Worley, R., et al. 2005. Transcriptional network of multiple capsule and melanin genes governed by the *Cryptococcus neoformans* cyclic AMP cascade. *Eukaryot. Cell*. **4**:190–201.
23. Noverr, M.C., Williamson, P.R., Fajardo, R.S., and Huffnagle, G.B. 2004. *CNLAC1* is required for extrapulmonary dissemination of *Cryptococcus neoformans* but not pulmonary persistence. *Infect. Immun.* **72**:1693–1699.
24. Ory, J.J., Griffith, C.L., and Doering, T.L. 2004. An efficiently regulated promoter system for *Cryptococcus neoformans* utilizing the *CTR4* promoter. *Yeast*. **21**:919–926.
25. Malliaris, S.D., Steenbergen, J.N., and Casadevall, A. 2004. *Cryptococcus neoformans* var. *gattii* can exploit *Acanthamoeba castellanii* for growth. *Med. Mycol.* **42**:149–158.
26. Panepinto, J., et al. 2005. The DEAD-box RNA helicase *Vad1* regulates multiple virulence-associated genes in *Cryptococcus neoformans*. *J. Clin. Invest.* **115**:632–641. doi:10.1172/JCI200523048.
27. Singh, N., et al. 2005. Antifungal management practices and evolution of infection in organ transplant recipients with *Cryptococcus neoformans* infection. *Transplantation*. **80**:1033–1039.
28. Blankenship, J.R., Singh, N., Alexander, B.D., and Heitman, J. 2005. *Cryptococcus neoformans* isolates from transplant recipients are not selected for resistance to calcineurin inhibitors by current immunosuppressive regimens. *J. Clin. Microbiol.* **43**:464–467.
29. Marvin, M., Mason, R., and Cashmore, A. 2004. The *CaCTR1* gene is required for high-affinity iron uptake and is transcriptionally controlled by a copper-sensing transactivator encoded by *CaMAC1*. *Microbiology*. **150**:2197–2208.
30. Huang, G., Nie, X., and Chen, J. 2006. *CaMac1*, a *Candida albicans* copper ion-sensing transcription factor, promotes filamentous and invasive growth in *Saccharomyces cerevisiae*. *Acta. Biochim. Biophys. Sin. (Shanghai)*. **38**:213–217.
31. Srikantha, T., Zhao, R., Daniels, K., Radke, J., and Soll, D. 2005. Phenotypic switching in *Candida glabrata* accompanied by changes in expression of genes with deduced functions in copper detoxification and stress. *Eukaryot. Cell*. **4**:1434–1445.
32. Fagiuali, S., et al. 2002. Liver transplantation: the Italian experience. *Dig. Liver. Dis.* **34**:640–648.
33. Fiszler, U., et al. 1996. Gamma delta + T cells in Wilson's disease. *Int. J. Clin. Lab. Res.* **26**:51–54.
34. Beaudoin, J., and Labbe, S. 2006. Copper induces cytoplasmic retention of fission yeast transcription factor *cut1*. *Eukaryot. Cell*. **5**:277–292.
35. Van Ho, A., Ward, D., and Kaplan, J. 2002. Transition metal transport in yeast. *Annu. Rev. Microbiol.* **56**:237–261.
36. Feldmesser, M., Kress, Y., Novikoff, P., and Casadevall, A. 2000. *Cryptococcus neoformans* is a facultative intracellular pathogen in murine pulmonary infection. *Infect. Immun.* **68**:4225–4237.
37. Lim, M., Xu, D., and Lippard, S. 2006. Visualization of nitric oxide in living cells by a copper-based fluorescent probe. *Nat. Chem. Biol.* **2**:375–380.
38. Chung, J., Haile, D., and Wessling-Resnick, M. 2004. Copper-induced ferroportin-1 expression in J774 macrophages is associated with increased iron efflux. *Proc. Natl. Acad. Sci. U. S. A.* **101**:2700–2705.
39. Levenson, C. 2005. Trace metal regulation of neuronal apoptosis: from genes to behavior. *Physiol. Behav.* **86**:399–406.
40. Chang, Y.C., et al. 2004. Cryptococcal yeast cells invade the central nervous system via transcellular penetration of the blood-brain barrier. *Infect. Immun.* **72**:4985–4995.
41. Lentsch, A., Kato, A., Saari, J., and Schuschke, D. 2001. Augmented metalloproteinase activity and acute lung injury in copper-deficient rats. *Am. J. Physiol. Lung Cell. Mol. Physiol.* **281**:L387–L393.
42. Kaslow, D.C., and Shiloach, J. 1994. Production, purification and immunogenicity of a malaria transmission-blocking vaccine candidate: TBV25H expressed in yeast and purified using nickel-NTA agarose. *Biotechnology (N.Y.)*. **12**:494–499.
43. Zerhouni, E. 2005. Translational and clinical science – time for a new vision. *N. Engl. J. Med.* **353**:1621–1623.
44. Toffaletti, D.L., and Perfect, J.R. 1997. Study of *Cryptococcus neoformans* actin gene regulation with a beta-galactosidase-actin fusion. *J. Med. Vet. Mycol.* **35**:313–320.
45. Andreeva, A., and Murzin, A. 2006. Evolution of protein fold in the presence of functional constraints. *Curr. Opin. Struct. Biol.* **16**:399–408.
46. Panepinto, J., and Williamson, P. 2006. Intersection of fungal fitness and virulence in *Cryptococcus neoformans*. *FEMS Yeast Res.* **6**:489–498.
47. Casadevall, A., and Pirofski, L. 2003. The damage-response framework of microbial pathogenesis. *Nat. Rev. Microbiol.* **1**:17–24.
48. Erickson, T., et al. 2001. Multiple virulence factors of *Cryptococcus neoformans* are dependent on *VPH1*. *Mol. Microbiol.* **42**:1121–1131.
49. Zhu, X., and Williamson, P.R. 2003. A CLC-type chloride channel gene is required for laccase activity and virulence in *Cryptococcus neoformans*. *Mol. Microbiol.* **50**:1271–1281.
50. Cox, G.M., Toffaletti, D.L., and Perfect, J.R. 1996. Dominant selection system for use in *Cryptococcus neoformans*. *J. Med. Vet. Mycol.* **34**:385–391.
51. Cruz, M.C., Fox, D.S., and Heitman, J. 2001. Calcineurin is required for hyphal elongation during mating and haploid fruiting in *Cryptococcus neoformans*. *EMBO J.* **20**:1020–1032.
52. Varma, A., Edman, J.C., and Kwon-Chung, K.J. 1992. Molecular and genetic analysis of *URA5* transformants of *Cryptococcus neoformans*. *Infect. Immun.* **60**:1101–1108.
53. Liu, X., Hu, G., Panepinto, J., and Williamson, P. 2006. Role of a *VPS41* homolog in starvation response and virulence of *Cryptococcus neoformans*. *Mol. Microbiol.* **61**:1132–1146.
54. Zhang, S., Varma, A., and Williamson, P.R. 1999. The yeast *Cryptococcus neoformans* uses 'mammalian' enhancer sites in the regulation of the virulence gene, *CNLAC1*. *Gene*. **227**:231–240.
55. Tucker, S.C., and Casadevall, A. 2002. Replication of *Cryptococcus neoformans* in macrophages is accompanied by phagosomal permeabilization and accumulation of vesicles containing polysaccharide in the cytoplasm. *Proc. Natl. Acad. Sci. U. S. A.* **99**:3165–3170.
56. Hmama, Z., et al. 2004. Quantitative analysis of phagolysosome fusion in intact cells: inhibition by mycobacterial lipoarabinomannan and rescue by an 1alpha, 25-dihydroxyvitamin D3-phosphoinositide 3-kinase pathway. *J. Cell Sci.* **117**:2131–2140.
57. Singh, N., et al. 2005. Allograft loss in renal transplant recipients with *Cryptococcus neoformans* associated immune reconstitution syndrome. *Transplantation*. **80**:1131–1133.
58. Cox, G., Mukherjee, J., Cole, G., Casadevall, A., and Perfect, J. 2000. Urease as a virulence factor in experimental cryptococcosis. *Infect. Immun.* **68**:443–448.
59. Liu, L., Wakamatsu, K., Ito, S., and Williamson, P.R. 1999. Catecholamine oxidative products, but not melanin, are produced by *Cryptococcus neoformans* during neuropathogenesis in mice. *Infect. Immun.* **67**:108–112.
60. Hosmer, D., and Lemeshow, S. 1999. *Applied survival analysis: regression modeling of time to event data*. John Wiley and Sons. New York, New York, USA. 408 pp.
61. Mendenhall, W. 1975. *Introduction to probability and statistics*. Duxbury Press. Belmont, California, USA. 460 pp.